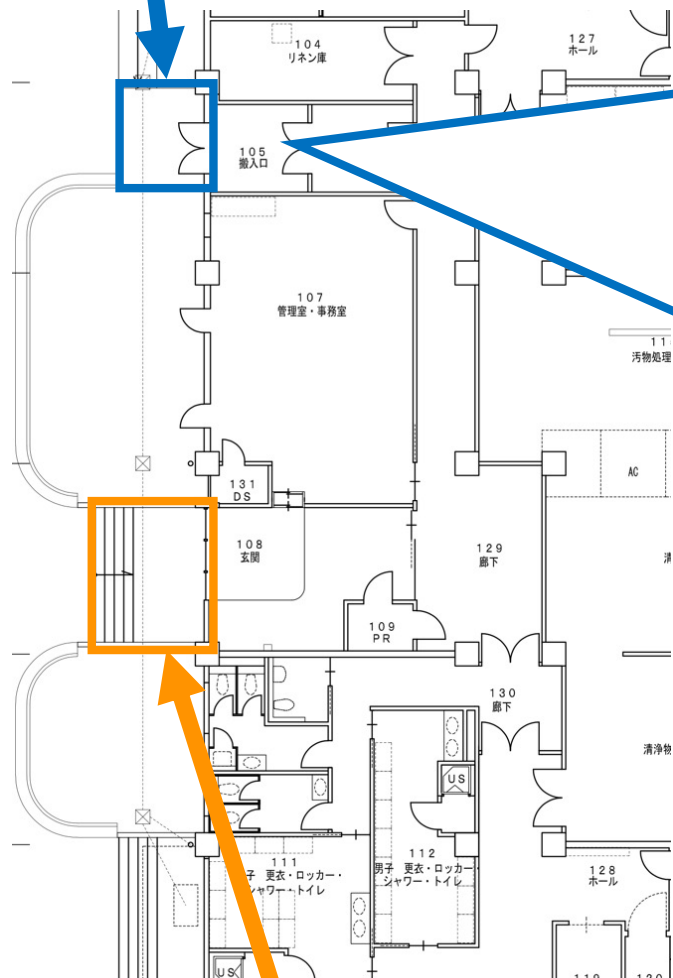


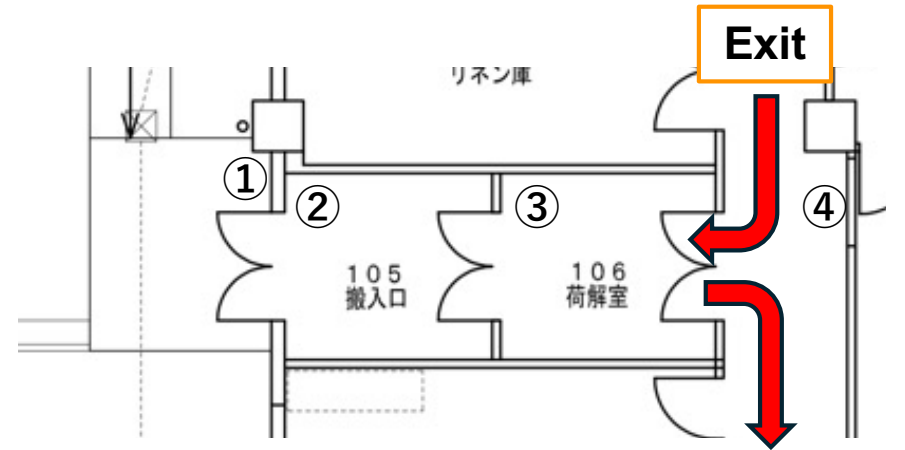
# Temporary Entrance (July 13 to July 15)

Inquiries: Seiichi Otake (sotake@med.tohoku.ac.jp) / Contact information in case of trouble: 090-3129-3114

## Temporary Entrance



Main entrance (closed for repairs)



1. Unlock with card reader
2. Shoe box
3. Sandals for indoor use
4. Container for used sandals

Note: User lockers are available for use as usual.

If you use them, after placing indoor sandals in 4., please retrieve them without putting on the sandals.